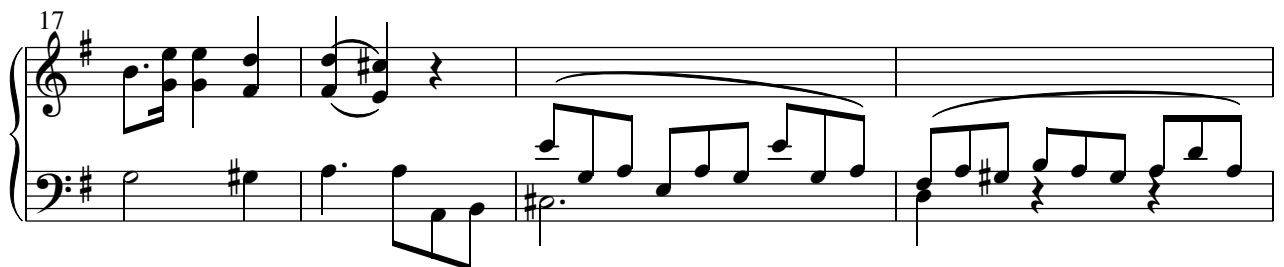
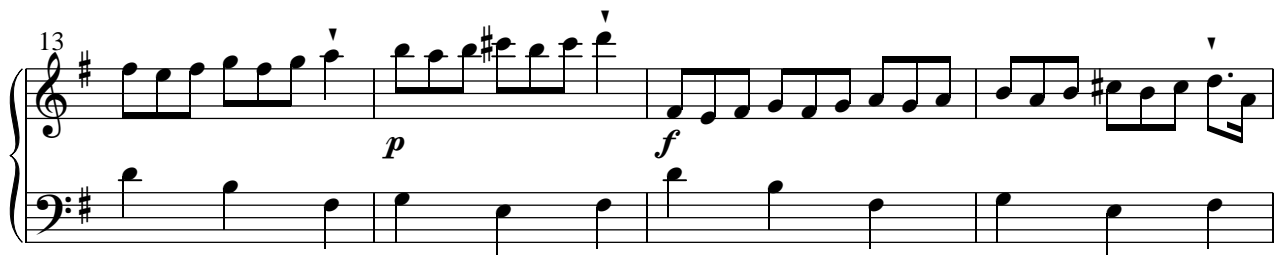
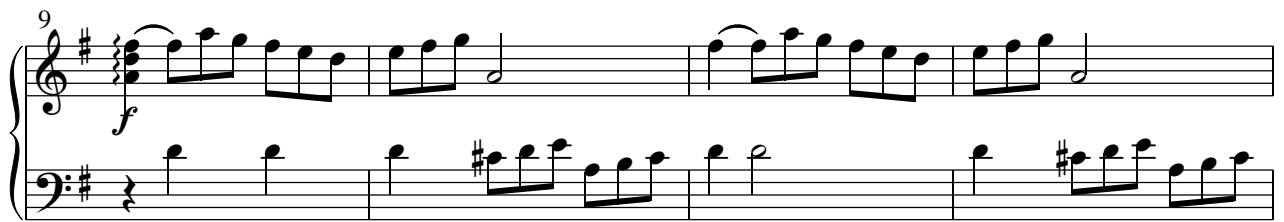
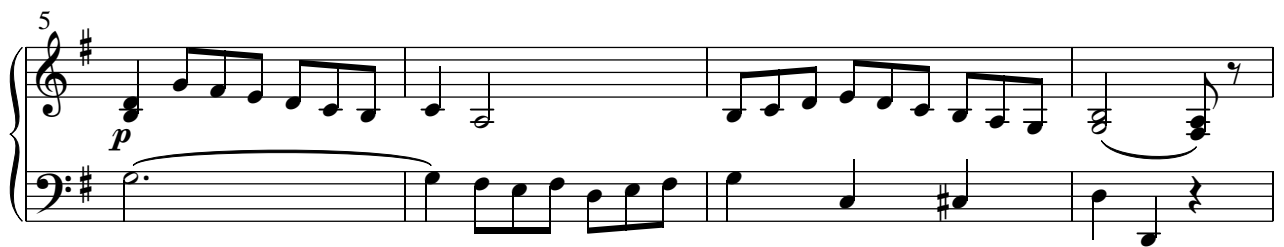
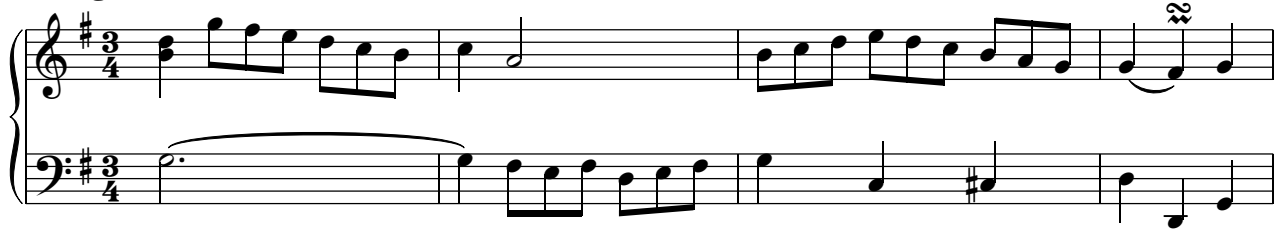


# SONATA X.

**Allegro**



21

Measures 21-24. Treble clef: Melodic line with slurs. Bass clef: Rhythmic accompaniment with slurs and rests.

25

Measures 25-27. Measure 25: First ending bracket. Measure 26: Second ending bracket. Measure 27: Final measure of the system.

28

Measures 28-31. Measure 28: *pf* dynamic marking. The system ends with a repeat sign.

32

Measures 32-35. Measure 32: *p* dynamic marking. The system ends with a repeat sign.

36

Measures 36-39. Measure 36: *f* dynamic marking. The system ends with a repeat sign.

40

Measures 40-43. Measure 40: *p* dynamic marking. Measure 41: *p/f* dynamic marking. Measure 42: *p* dynamic marking. The system ends with a repeat sign.

44 *mf*

48 *f*

52

56

60 *p*

64 *f*

68

*mf*

72

*f*

76

*f*

**Andantino lusingando**

*p*

6

*mf*

11

*p*

16 *f* *mf* *p*

21 *p* *mf*

26 *p* *f* *p* *f*

31

35 *p* *mf* *f*

39

# Tempo di Minuetto

Measures 1-7 of the 'Tempo di Minuetto' section. The music is in 3/4 time with a key signature of one sharp (F#). The right hand features a melodic line with trills (tr) and grace notes (~). The left hand provides a harmonic accompaniment with chords and single notes. Dynamics include *pf* (pianissimo) and *f* (forte).

Measures 8-14 of the 'Tempo di Minuetto' section. The right hand continues the melodic development with tenuto marks (ten.) indicating sustained notes. The left hand maintains the accompaniment. Dynamics include *mf* (mezzo-forte).

Measures 15-21 of the 'Tempo di Minuetto' section. The right hand features a melodic line with tenuto marks (ten.) and a dynamic of *p* (piano). The left hand continues the accompaniment.

Measures 22-28 of the 'Tempo di Minuetto' section. The right hand includes a melodic line with a dynamic of *pf* (pianissimo) and a final measure with a dynamic of *p* (piano). The left hand continues the accompaniment.

Measures 29-35 of the 'Tempo di Minuetto' section. The right hand features a melodic line with trills (tr) and grace notes (~). The left hand provides a harmonic accompaniment. Dynamics include *pp* (pianissimo), *pf* (pianissimo), *f* (forte), and *pf* (pianissimo). A tempo change to *Adagio* is indicated above measure 29.

Measures 36-42 of the 'Tempo di Minuetto' section. The right hand continues the melodic development with a dynamic of *mf* (mezzo-forte). The left hand provides a harmonic accompaniment.

43

*p p p f*

50

*pp pf*

57

Adagio

*p pp*

62

*p f f p f f*

68

*p p f f*

73

*p p f f f*